

Sheffield Wind Residential Proximity Map

Scale 1:28,000

Topographic relief map surrounding Sheffield Wind showing proximity of E911 residences and seasonal homes within one and a half miles of the Project.

Legend

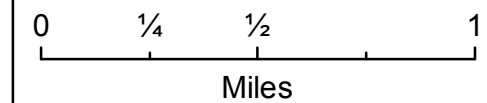
- Turbine Locations
- E911 Residences, VCGI
- E911 Seasonal Homes, VCGI
- DPS Complaintants
- 1/2 Mile Radius
- 1 Mile Radius
- 1 1/2 Mile Radius

E911 Residences near the Project:
 30 within 1.5 miles
 6 within 1 mile
 0 within 0.5 mile

E911 Seasonal Homes near the Project:
 24 within 1.5 miles
 13 within 1 mile
 2 within 0.5 mile

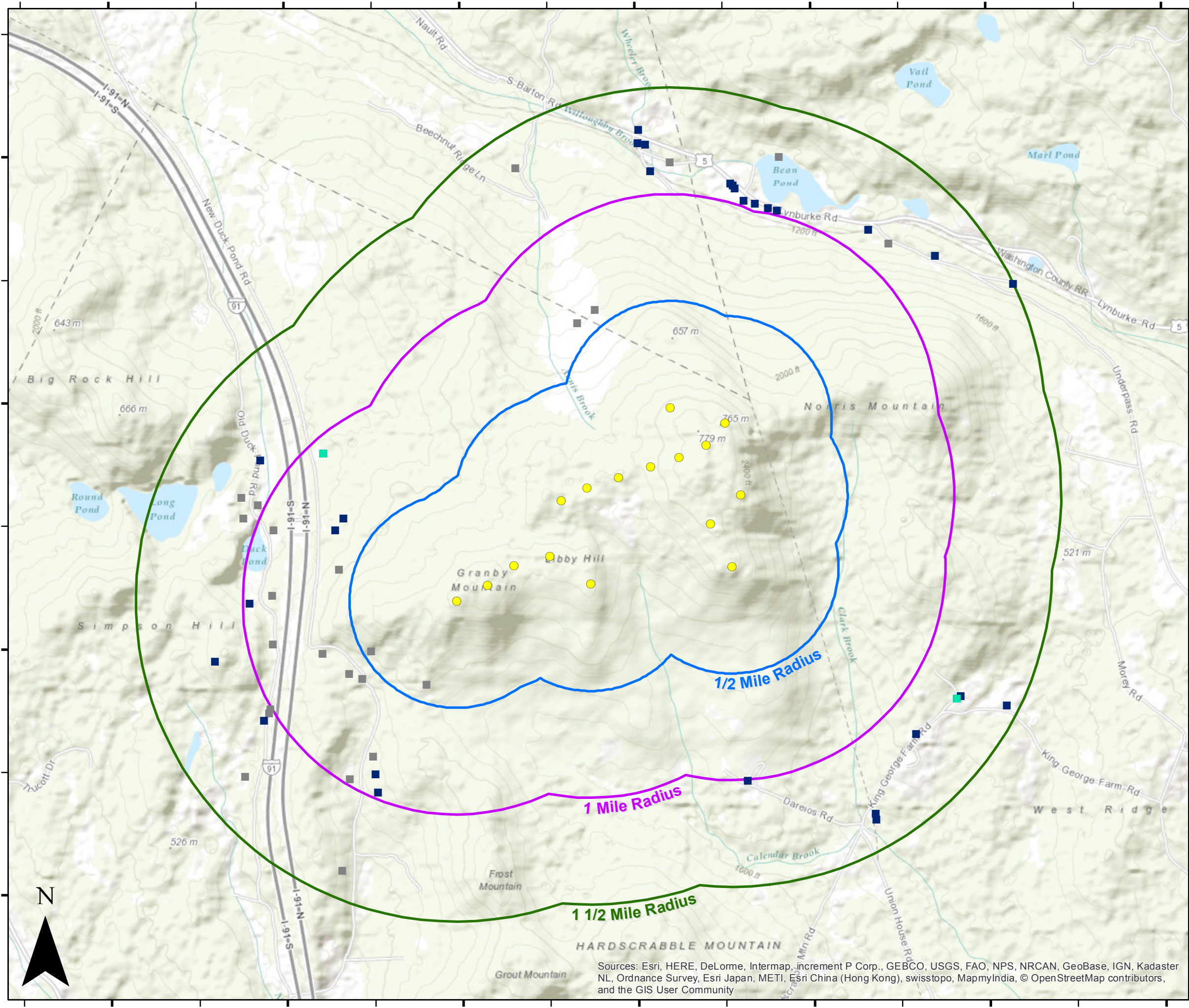
DPS recorded 110 complaints through 11/30/2015.
 4 Complaintants:
 1 on New Duck Pond Road
 1 on Queen Elizabeth Farm Lane

Mapped VCGI E911 residences within 1.5 miles of the Project include "Site Types" listed as "Mobile Home", "Other Residential", and "Single Family Dwelling". Mapped E911 seasonal homes within 1.5 miles of the Project include "Site Types" listed as "Camp". E911 data last updated on July 5, 2015.



Data sources: The underlying USGS relief map and E911 data are provided by VCGI at VCGI.vermont.gov. Project data are provided by Sheffield Wind LLC.

Prepared: 20160404rd Revised: 20160407rd



Sources: Esri, HERE, DeLorme, Intermap, increment P Corp., GEBCO, USGS, FAO, NPS, NRCAN, GeoBase, IGN, Kadaster NL, Ordnance Survey, Esri Japan, METI, Esri China (Hong Kong), swisstopo, MapmyIndia, © OpenStreetMap contributors, and the GIS User Community